

911.gov

 **NHTSA**

 **ems.gov**

State of 911

Webinar Series

Enhancing 911 Operations & Technology for Safer Streets

NHTSA National 911 Program

January 21, 2025



STATE OF 911 WEBINAR SERIES



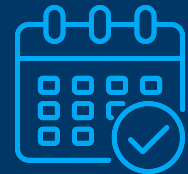
VARIETY OF TOPICS

Provides useful information to the 911 community on the advancement of 911.



EXPERIENCE

Brings Federal, State and local leaders to you!



REGISTER

Held every other month with opportunity for Q&A.
Closed captioning is available.



FEEDBACK & QUESTIONS

nhtsa.national911@dot.gov

911.GOV RESOURCE: DOCS & TOOLS



| Categories | |
|------------------------------|---|
| All | |
| Governance | > |
| Historical Documents | |
| Management | > |
| National 911 Program | > |
| Operations | > |
| Post-Crash Care | |
| Standards and Best Practices | > |
| Technical | > |

| Sort By | |
|--------------|--|
| Title | |
| Publish Date | |

Have a resource you'd like to share with the community?

Click here to share

Search Documents & Tools

302 results



NSGIC Addresses for the Nation - Pathways from Restricted Data to Open Data

This white paper describes how three states—Arizona, Kansas and Kentucky—overcame policies in place that restrict data from being shared publicly to become NAD partners.

Jun 7, 2023 / Technical / GIS
/ National 911 Program / Additional Resources



What Is a Safe System Approach?

This webpage explains the principles and objectives of the U.S. Department of Transportation's Safe System Approach.

Jun 7, 2023 / Post-Crash Care
/ National 911 Program / Additional Resources




NATIONAL TELECOMMUNICATOR TREE OF LIFE

911 Telecommunicator
Tree of Life

[Home](#) [About](#) [Add a Leaf](#) [Contact](#)

Celebrating 911 Telecommunicators

and Honoring the Impact They Make in Our Lives Every Day



The Tree of Life "grows" with every story told! Share how a 911 telecommunicator made a difference to your community.

Add a Leaf

Share a Story, Sprout a Leaf

This Tree of Life has been "planted" here with the support of national 911 organizations to recognize remarkable 911 telecommunicators and the difference they make every day in our communities. Each leaf on the tree represents telecommunicators that have been honored by someone in their community. We invite you to click on the leaf to read the story for the telecommunicator or communications center listed.

Check back often to submit stories recognizing your telecommunicator colleagues and to view featured stories.

911.gov

NHTSA

ems.gov

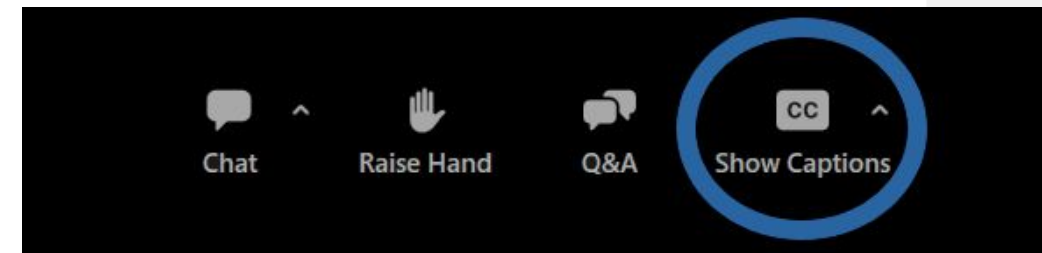
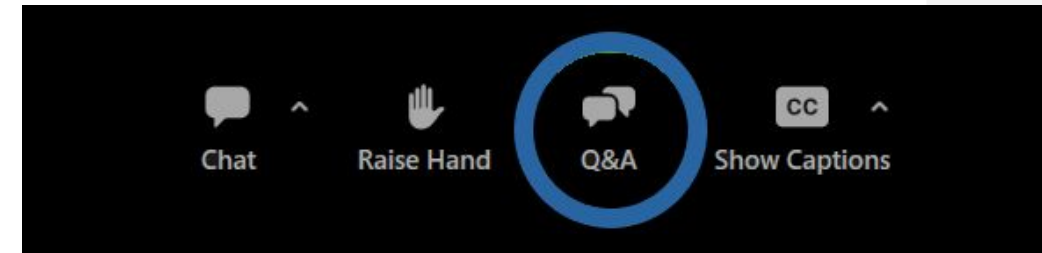
State of 911
Webinar Series

4

ZOOM FUNCTIONS

This webinar will utilize three features in the Zoom Meeting controls.

- “Raise Hand” - Use this feature to ask your question live. You will be called upon and unmuted
- “Q&A” - Use this feature to submit your question virtually in a pop-up window/chat box
- “Show Captions” - Use this feature to turn on closed captions at any point during the webinar



ENHANCING 911 OPERATIONS:

The Role of 911 in Highway Safety

THE SAFE SYSTEM APPROACH

911's Role in All Five Elements

Safer People

Risky behavior reported to 911 (DUI, reckless/distracted driving)

Safer Roads

Unsafe conditions are reported to 911 (debris, lights, hazards)



THE SAFE SYSTEM APPROACH

Safer Speeds

911 centers are an integral part of the enforcement of speed and traffic laws by dispatching and recording law enforcement actions.

Safer Vehicles

Automatic Crash Notification/Advanced Automatic Crash Notification (ACN/AACN) systems connect 911 centers and transmit critical data through telemetry.

Post-Crash Care

Post-crash care begins with a call to 911. Telecommunicators must work with the caller to identify the location, nature and severity of the crash and dispatch help.



**911 is the first, critical step in
the life-saving system of care
on the roadways.**

EMERGENCY RESPONSE TO CRASHES

Every year there
are approximately

13 million motor-vehicle
crashes.²



911 dispatches
law enforcement to

6 million crashes
annually.²

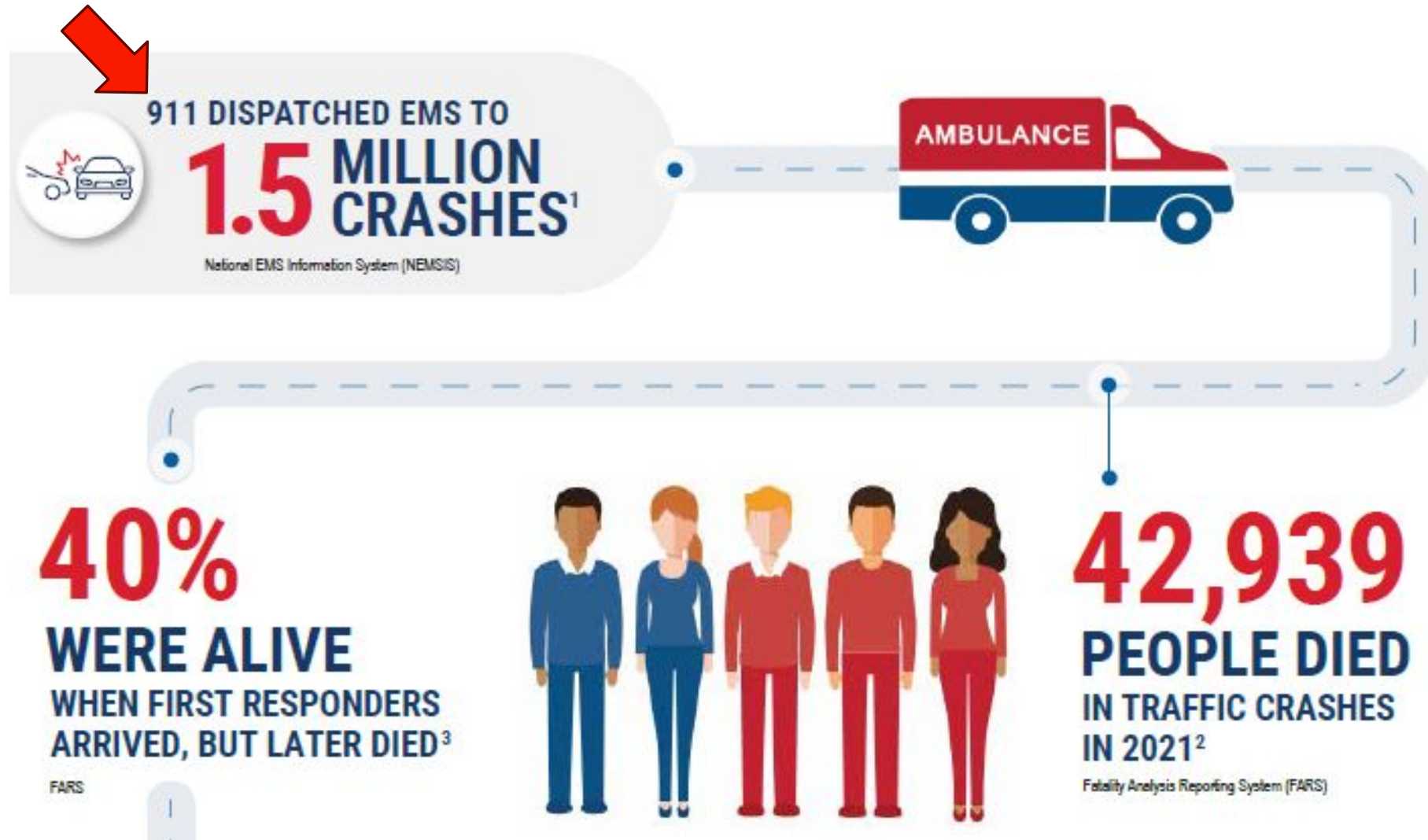
911 dispatches
EMS to

1.5 million crashes.³



PROBLEM IDENTIFICATION

911.gov

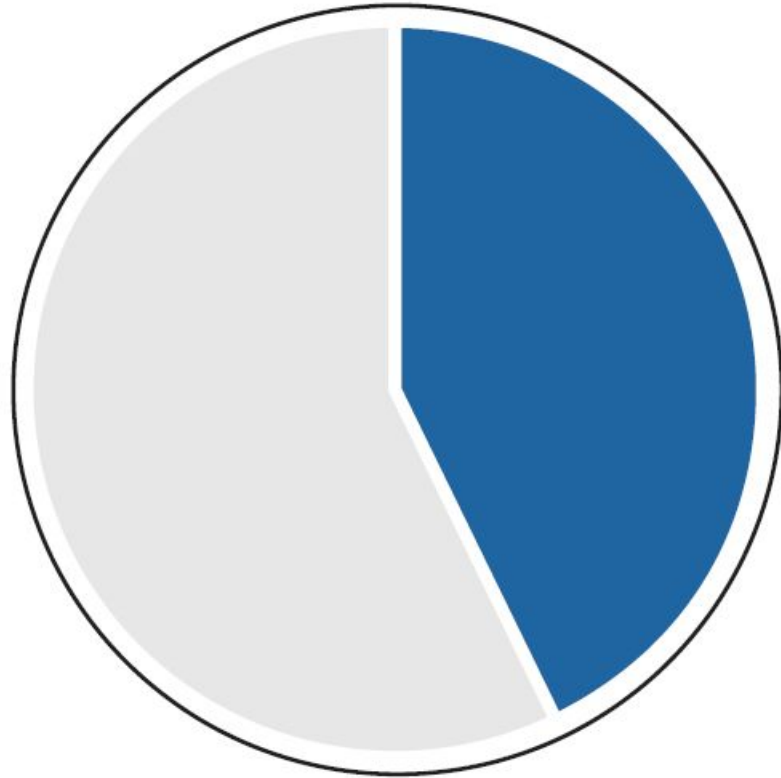


NATIONAL TRAFFIC INCIDENT MANAGEMENT

- **FREE** online training for responders provided by the Federal Highway Administration (FHWA)
- Effective Traffic Incident Management (TIM):
 - Reduces the duration and impacts of traffic incidents
 - Improves the safety of emergency responders
 - Reduces the frequency of secondary crashes



UTILIZATION OF PROTOCOL SYSTEMS



43%

**of PSAPs provide
Emergency Medical
Dispatch (EMD) and
follow a specific protocol**

911'S ROLE IN HIGHWAY SAFETY

Operations

- Call Taking Protocols
- Traffic Incident Management (TIM) Training
- Minimum Training Guidelines

Geographic Information Systems

- NG911 Compliant
- Better location information
- Identification of jurisdictional boundaries

Data

- Data uniformity
- Automated collection
- Operational data
- Technical data
- Administrative data

Interoperability

- CAD to CAD
- 911 call transfers between jurisdictions on local, state, national level
- Standards conformance and interoperability



911 & Highway Safety Collaboration

Q&A

Use Q&A function for Live Responses.

TECHNOLOGY FOR SAFER STREETS:

Utilizing Waze Data in 911 Center Operations



State of 9-1-1

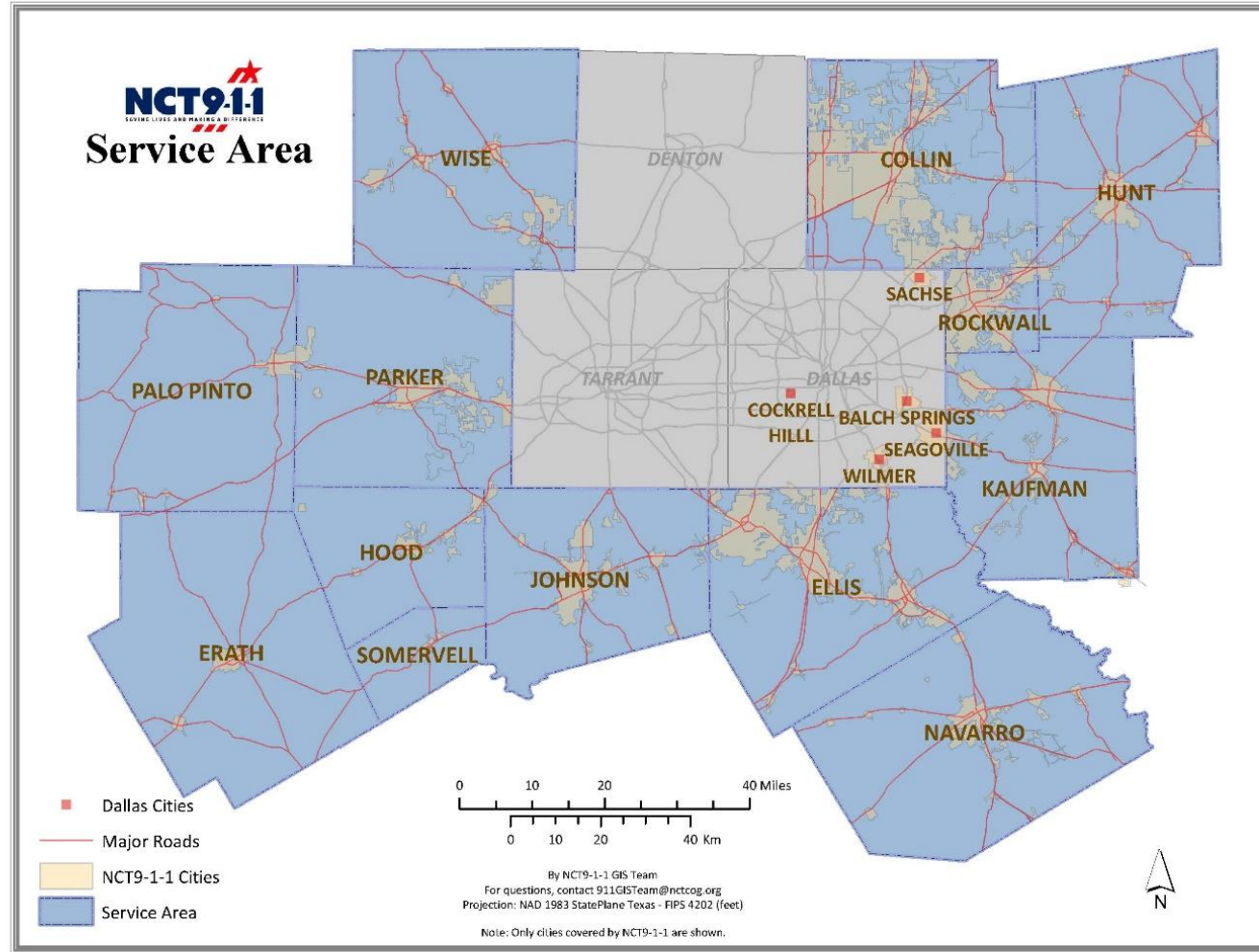
North Central Texas Emergency Communications District

Agenda

- Introduction to NCT9-1-1
- NCT9-1-1 Traffic and Navigation Technology
- NCTCOG 511
- Connect with NCT9-1-1
- Questions

Who We Serve

- ▣ 14 counties surrounding the Dallas/Fort Worth Metroplex
 - 156 cities
- ▣ 40 plus Emergency Communications Centers
- ▣ 9,907 plus square miles in region
- ▣ Population in NCT9-1-1 Program:
 - 2.098 million

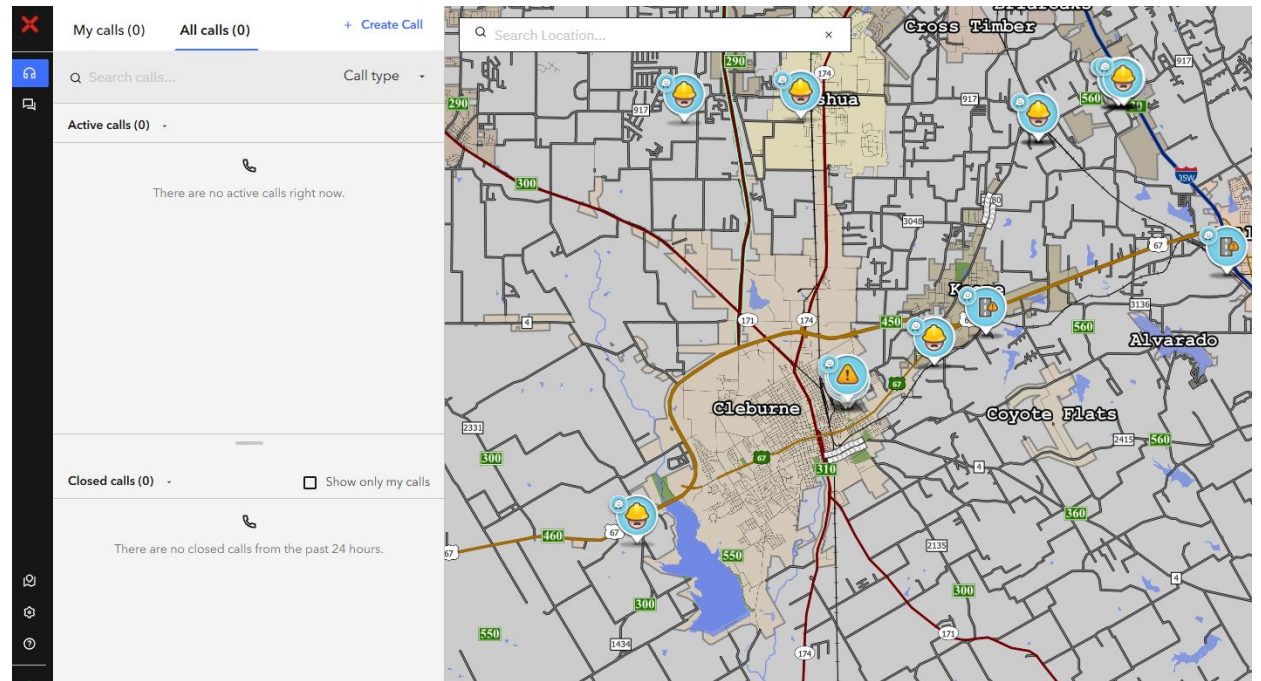


Our System

- ❑ Enhanced 9-1-1 since 1991
- ❑ Wireless Phase II, VoIP Pre-i2
- ❑ Text-to-9-1-1
- ❑ Enhanced Wireless Location
- ❑ Cloud based Dispatch Mapping
- ❑ Real Time Text (RTT)
- ❑ Cloud based Data Analytics

NCT9-1-1 Traffic and Navigation Technology

- 2019 Waze integration
 - Early Adopters: First 9-1-1 integration¹
 - Waze for Cities partner
 - Filtered events to reduce “noise”



¹<https://dallasinnovates.com/how-north-texas-dispatchers-tapped-waze-data-to-speed-9-1-1-response-times/>

NCT9-1-1 Traffic and Navigation Technology

- Dynamic Low Water Sensor Technology

The screenshot displays the NCT9-1-1 Traffic and Navigation Technology interface. On the left, a sidebar contains navigation options: 'My calls (0)', 'All calls (0)', and '+ Create Call'. Below these are search bars for 'Search calls...' and 'Call type'. The main area shows 'Active calls (0)' with a message 'There are no active calls right now.' and 'Closed calls (0)' with a message 'There are no closed calls from the past 24 hours.' and a checkbox for 'Show only my calls'. The right side features a map with a 'OneRain Sensor Data Site: 5000Creek Trail Master' popup. The popup displays the following data:

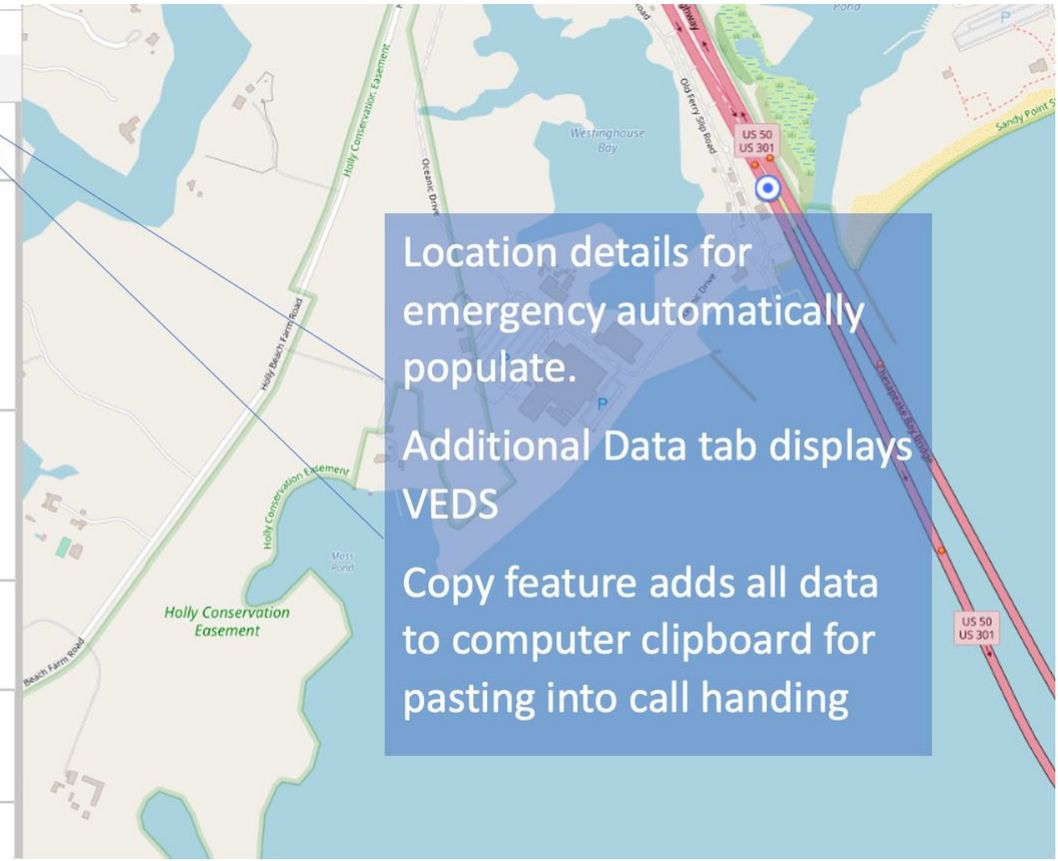
| OneRain Sensor Data Site: 5000Creek Trail Master | |
|--|-----------------------------|
| Site ID# | 5000 |
| Location Name | Creek Trail Master |
| Latitude | 33.1849972 |
| Longitude | -96.6403083 |
| Sensor Value | -11.19 |
| Time Recorded | January 17, 2025 at 1:56 PM |
| Sensor ID# | 5003-A |
| Flood Status | Normal Water Level |

NCT9-1-1 Traffic and Navigation Technology

- Vehicle Telematics

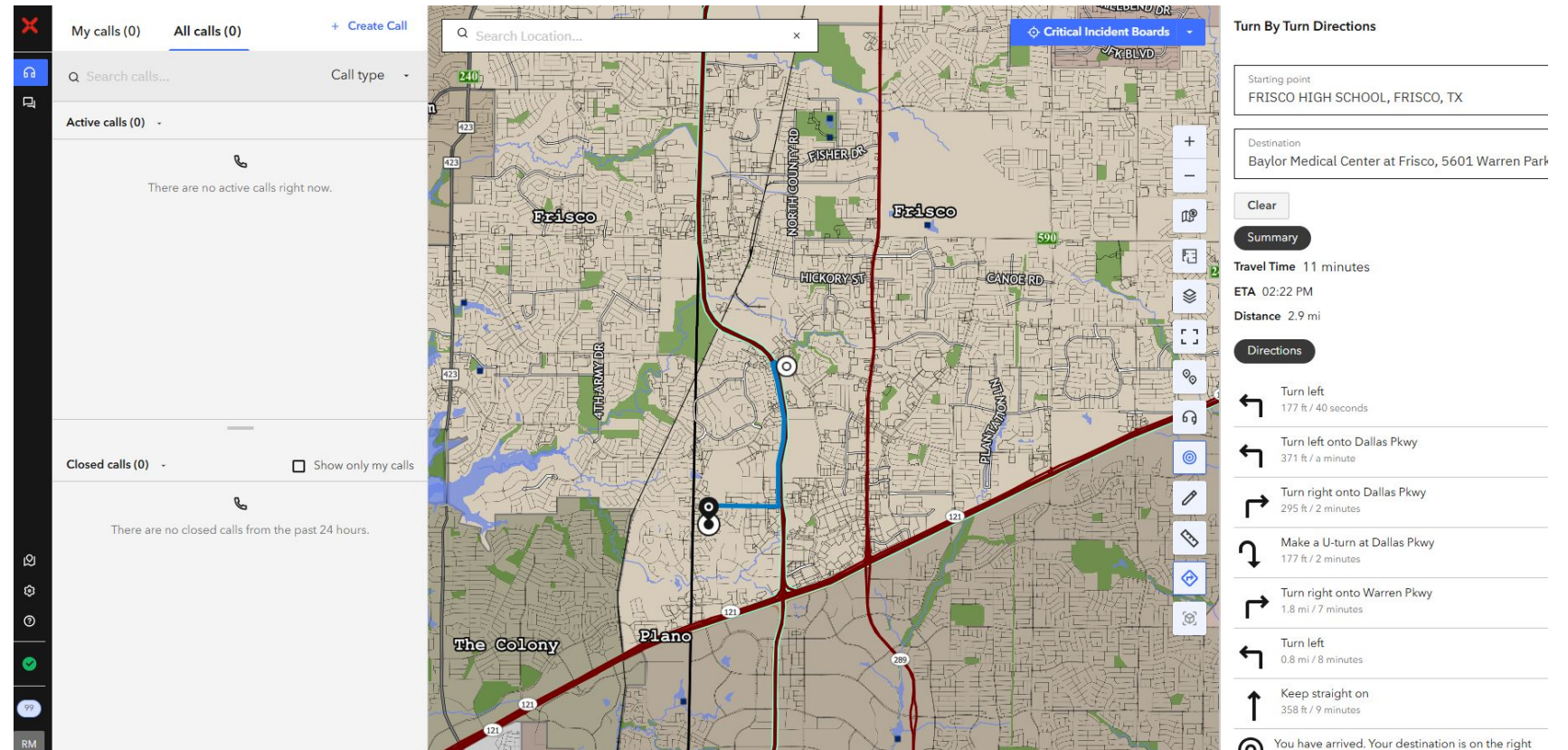


| Location timeline | Additional data | SMS chat |
|---------------------------------------|---------------------------------|----------------------|
| Source: OnStar 866-866-5006 | | |
| Interaction id 2208471968 | | Copy |
| Vehicle information | | |
| Color Black | Make Chevrolet | |
| Model Bolt | Model year 2022 | |
| Vehicle propulsion type Electric | Autonomous indicator - | |
| Crash details | | |
| Multiple impacts indicator Yes | Severe injury indicator High | |
| Vehicle direction of impact Driver | | |
| Airbags | | |
| Airbag deployed Front | Airbag deployed Left Side | |
| Seats 1 | | |
| Crash indicator Yes | Seat location FrontLeft | |
| Seats 2 | | |



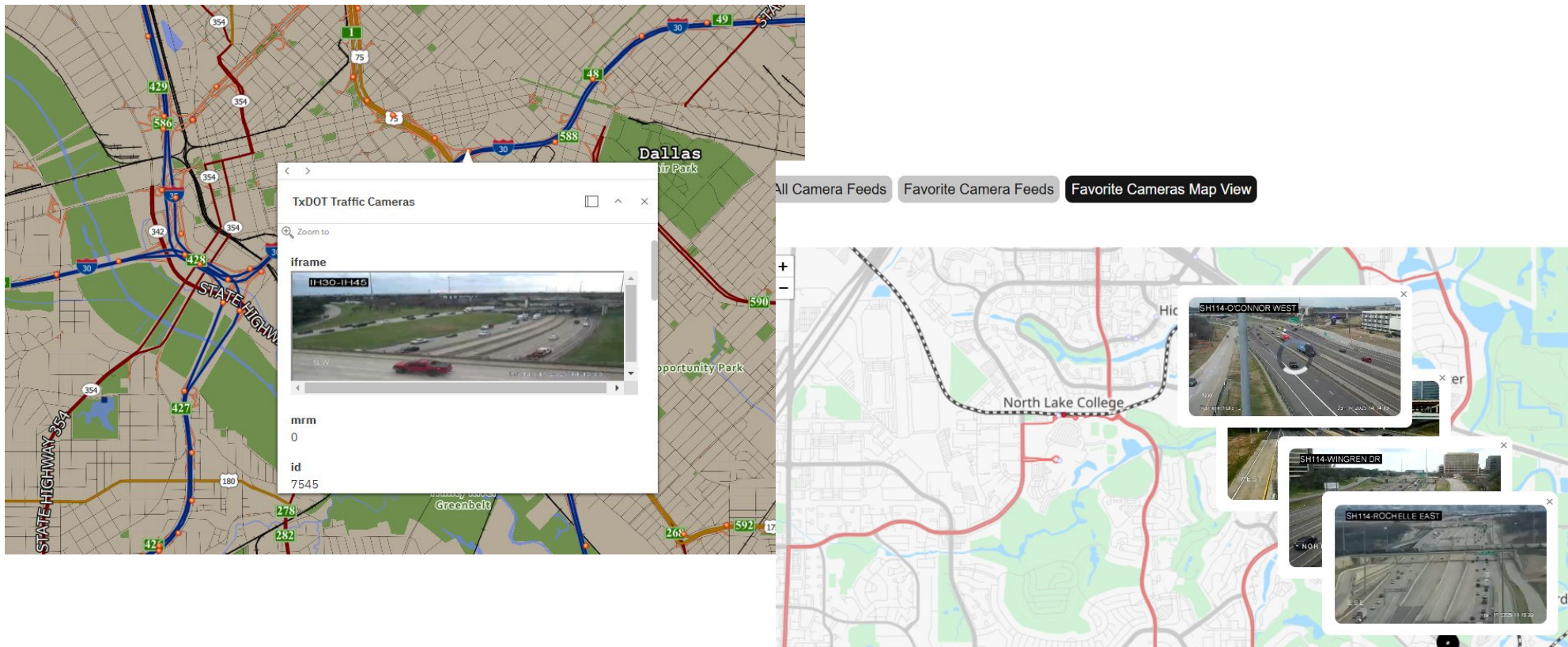
NCT9-1-1 Traffic and Navigation Technology

- Built in navigation



NCT9-1-1 Traffic and Navigation Technology

- Live Traffic Cameras

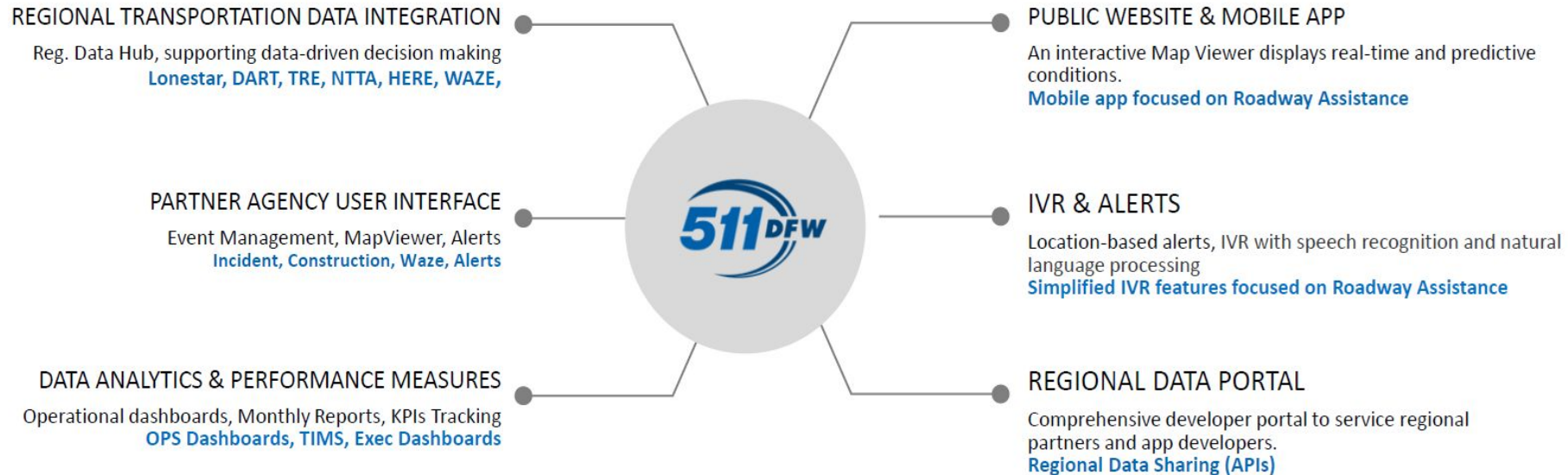


NCTCOG Transportation 511

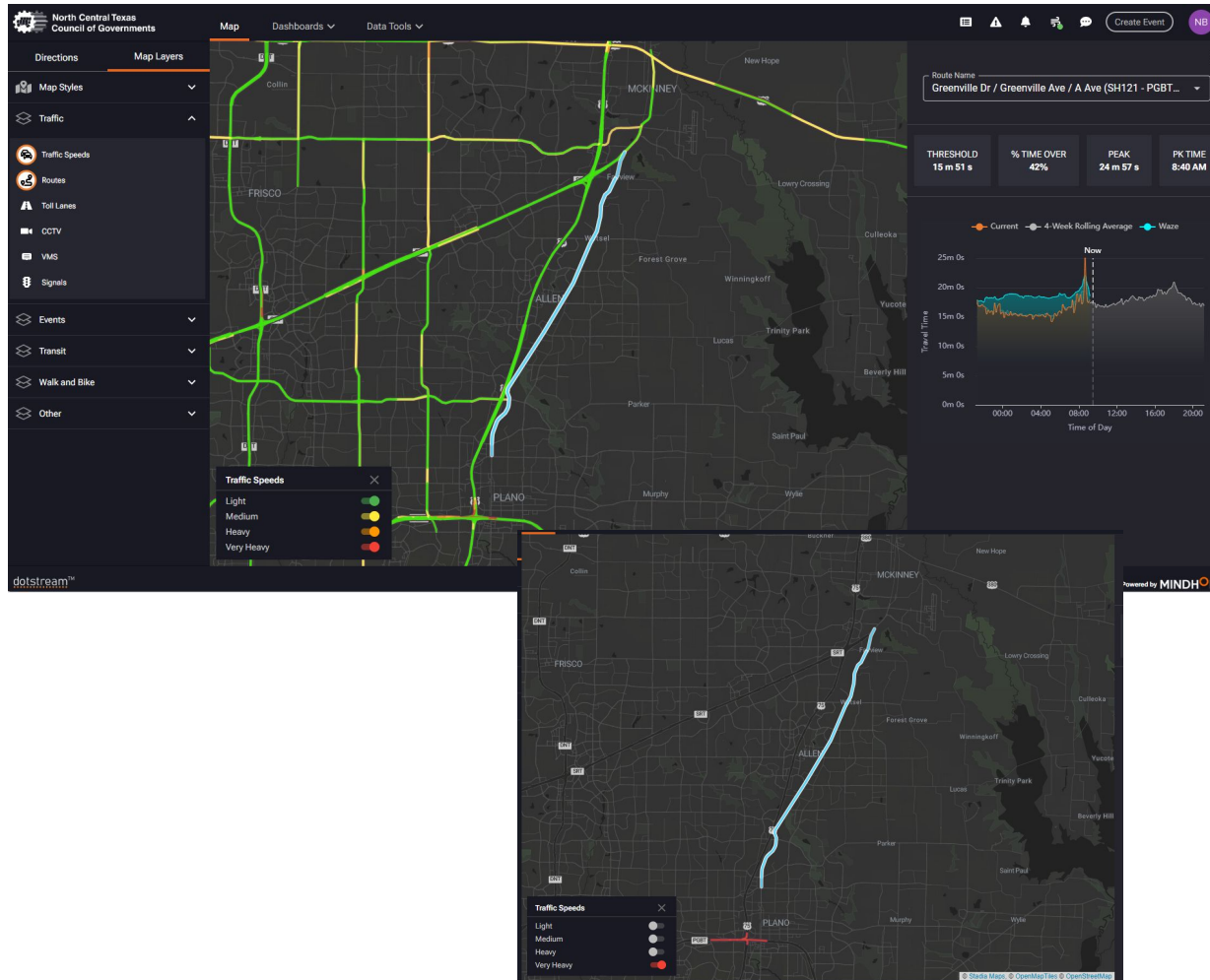
511DFW Software as a Service (SaaS) Solution

Regional transportation data integration for operations, planning, and executive decision-making activities.

A Public Website, Mobile Application, Interactive Voice Recognition (IVR) system, and a Regional Data Portal.



NCTCOG Transportation 511

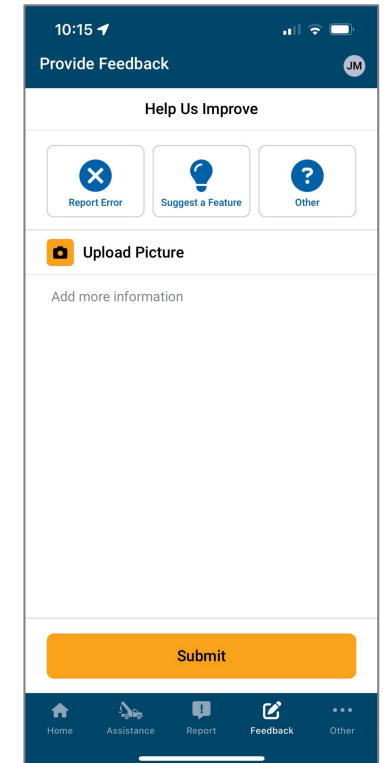
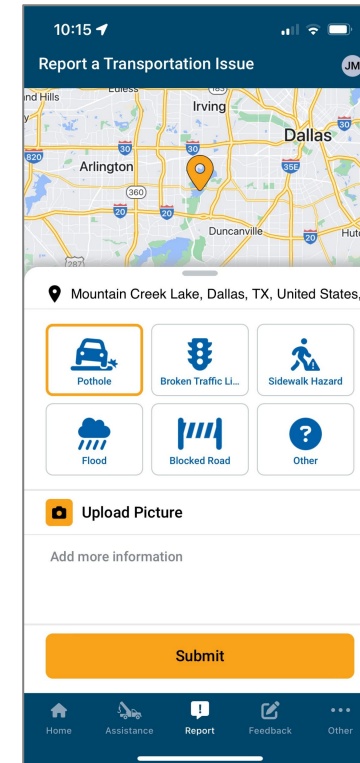
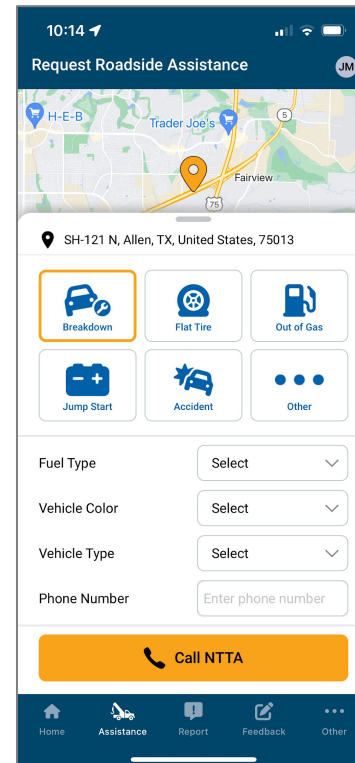


Map Layers

- Traffic
 - Traffic Speeds
 - Routes
 - Toll Lanes
 - CCTV Cameras
 - VMS Signs
 - Signals
- Events
 - Incidents
 - Transit Service Disruption
 - Construction
 - Planned Construction
 - Special Events
 - Planned Special Events
 - Waze
- Transit
 - DART
 - DCTA
 - Trinity Metro
- Walk and Bike
 - Walk/Bike Paths
 - Bike Lanes
- Other
 - Roadside Assistance
 - EV Charging Stations
 - Weather Conditions
 - Truck Routes
 - Mile Markers

NCTCOG Transportation 511

- iOS and Android
- Multi-language: English and Spanish
- Features
 - Roadside Assistance
 - Report Transportation Issue
 - Provide Feedback
 - Access to Other Regional Apps



Connect with Us

- ❑ Facebook.com/NCT911 | [@NCT911](https://www.instagram.com/NCT911)
- ❑ Twitter.com/NCT9_1_1 | [@NCT9_1_1](https://www.instagram.com/NCT9_1_1)
- ❑ Linkedin.com/company/NCT911
- ❑ NCT911.org/latest-news
- ❑ For questions, contact Christy Williams:
CWilliams@NCT911.org.

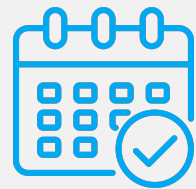
Q&A

Use Q&A function for Live Responses.

UPCOMING WEBINARS



March/April 2025
12:00PM ET



July 2025
12:00PM ET



Register & Watch
Previous Recordings

911.gov

NHTSA

ems.gov



Linked in

Brian Tegtmeyer, ENP

Coordinator

NHTSA National 911 Program



Linked in

Joni Harvey

Deputy Coordinator

NHTSA National 911 Program

Feedback & Questions: nhtsa.national911@dot.gov

