


State of 911

Webinar Series



NATIONAL 911 PROGRAM
January 10, 2023

State of 911 Webinar Series

- This webinar series is designed to provide useful information to the 911 community on the advancement of 911. The National 911 Program strives to bring you Federal, State and local leaders in public safety to share valuable information.
- Webinars are typically held every other month and include presentations from a federal-level 911 stakeholder and state-level 911 stakeholder, each followed by a 10-minute Q&A period
- For closed captioning, hover at the bottom of the Zoom screen for meeting controls, then click  to start viewing closed captioning
- For more information on future webinars, to access archived recordings and to learn more about the National 911 Program, please visit 911.gov
- Feedback or questions can be sent to: nhtsa.national911@dot.gov

Categories

All

Governance >

Historical Documents

Management >

National 911 Program >

Operations >

Standards and Best Practices >

Technical >

Sort By

Title

Publish Date

Have a resource you'd like to share with the community:

Click here to share

Documents & Tools

Search Documents & Tools

214 results



911 Caller COVID-19 Disclosure

Nov 1, 2021



A Tale of Two Approaches: Mandatory vs. Voluntary Implementations of NG911

Nov 1, 2021



APCO Next Generation Technologies Webpage

This is the link to resources of Next Generation Technologies on the APCO website.

Nov 1, 2021 / Technical / Networks



APCO Training and Certification Courses

This webpage provides information on a variety of online and in-person training courses for public safety communications professionals.

Nov 1, 2021 / Management / Education and Training



Best Practices for State Geospatial Maturity: NG911

Nov 1, 2021 / Management / Planning and Policy



Celebrating 911 Telecommunicators

and Honoring the Impact They Make in Our Lives Every Day

193

Number of Telecommunicators Honored



The Tree of Life "grows" with every story told! Share how a 911 telecommunicator made a difference to your community.

[Add a Leaf](#)

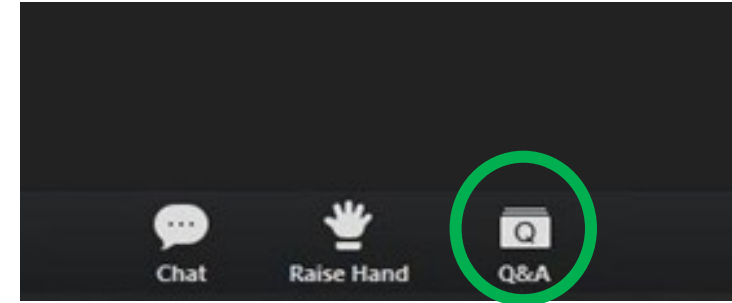
Share a Story, Sprout a Leaf

This Tree of Life has been "planted" here with the support of national 911 organizations to recognize remarkable 911 telecommunicators and the difference they make every day in our communities. Each leaf on the tree represents telecommunicators that have been honored by someone in their community.

Check back often to submit stories recognizing your telecommunicator colleagues and to view featured stories.

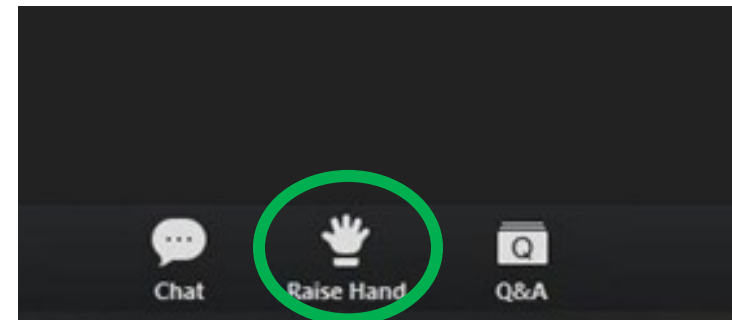
Questions

The “Q&A” feature is in the meeting controls that will display when hovering at the bottom of the Zoom screen.



Once clicked, a new pop-up window/chat box will open to navigate the Q&A functions.

Or, to ask your question “live,” use the “Raise Hand” feature to request your phone line to be unmuted, and you will be called upon to ask your question.



RAIL

MOVING AMERICA FORWARD



State of 911

January 2023

Agenda

- Introductions (FRA)
- FRA Overview
- Emergency Notification System Signs
- Law Enforcement/EMA/First Responders Resources
- FRA GIS Programs



Federal Railroad Administration

The Federal Railroad Administration (FRA) enables the safe, reliable, and efficient movement of people and goods for a strong America, now and in the future.

- Safety is our number one priority
- Continuing a rigorous oversight and inspection program based on strategic use of data
- Advancing proactive approaches for early identification and mitigation of risk
- Predictable dedicated funding to improve infrastructure through capital investments and robust research and development
- Laying a foundation for higher performing rail



Emergency Notification System

ENS is a system in place by which a railroad receives, processes, and responds to telephonic reports of an unsafe condition at a highway-rail or pathway grade crossing.

HIGHWAY RAIL CROSSINGS
EMERGENCY NOTIFICATION SYSTEM (ENS)

U.S. Department of Transportation
Federal Railroad Administration

**Get
HELP!
Use the Blue
ENS Sign**

In Case of Emergency

1. **Locate** the blue and white Emergency Notification System (ENS) Sign at the grade crossing.
2. **Call for help!** Call the railroad's emergency contact number listed on the blue sign.
3. **Communicate** your location, by providing the identification number (see below) and state the nature of the emergency to the dispatcher.

The ENS signs contains:

1. Each railroad's emergency contact number.

2. The U.S. Department of Transportation (USDOT) National Crossing Inventory Number which identifies the exact location of the crossing to the railroads.

Emergencies and safety concerns at the grade crossing should be reported by using the information on the ENS sign.

Please visit our website at:
www.fra.dot.gov

The mission of the Federal Railroad Administration (FRA) is: To enable the safe, reliable and efficient movement of people and goods for a strong America, now and in the future.

U.S. Department of Transportation
Moving America Forward

Emergency Notification System

In Case of Emergency

- **Locate** the blue-and-white Emergency Notification System (ENS) sign at the grade crossing.
- **Call for help!** Call the railroad's emergency contact number listed on the ENS sign.
- **Communicate** your location by providing the identification number and state the nature of the emergency to the dispatcher.

The ENS sign includes:



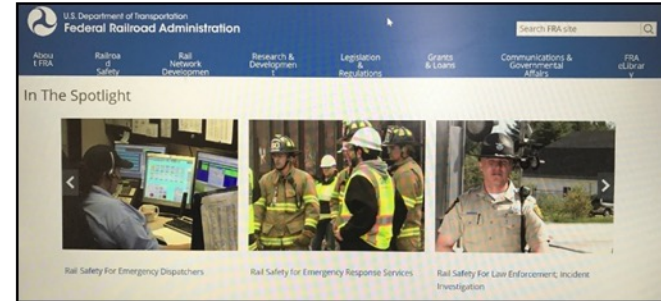
- 1 Each railroad's emergency contact number
- 2 The U.S. Department of Transportation National Crossing Inventory Number, which identifies the exact location of the crossing (X-ING) to the railroads

Report emergencies and safety concerns at the grade crossing by using the information on the ENS sign.

Emergency Notification System



State Laws App



Informational Video Series



Locator APP



National LE Terminal System

Emergency Notification System

National Law Enforcement Terminal System

- Enter USDOT
- Provides Emergency
- Contact Information

Received Time:	08:38:07 10-
Summary:	RCQ: RCI=36
<input type="checkbox"/> View Message Details	
Crossing Number 364929U	
Location of Crossing	
Highway RAMP B TO US 1 BRUNSWICK CUMBERLAND ME IN CITY Coordinates 43.54.29,-69.54.59	
Railroad Operating Company	
MAINE EASTERN RAILROAD 9732674300 State Highway Emergency Contact 2076243563 Crossing Owner Emergency Contact 8002745761	
Additional Crossing Details	
Crossing Nearby Highway: true Crossing Type: PUBLIC VEHICLE Crossing Position: AT GRADE UNDER Warning Devices: ALL OTHER GATES Other railroads do not operate a separate track at Crossing not equipped with train signals Crossing equipped with train detection Nearest Railroad Timetable Station: BRUNSWICK IN NLET NBR 3390 AT 10/08/2019 08:38:07 OUT BRUNPD03 12 AT 10/08/2019 08:38:07 MRI 28596	
Received Time:	08:38:06 10-
Summary:	RCQ: RCI=36
<input type="checkbox"/> View Message Details	
MESSAGE ACCEPTED - BRUNPD03 00007 at 10/08/2019 08:3	

Emergency Notification System

FRA's Rail Crossing Locator App

- Locate and access Safety Inventory Data for Highway-Rail Grade Crossings
- Tool for the public and public safety officials, including grade crossing specialists, safety, 1st Responders, communications specialist, and rail specialists
- Supports OMB's *Digital Data Gov Strategy* and *safety data.gov* initiatives for DOT/FRA
- Available now for Android, iPhone, and iPad



Law Enforcement/EMA/First Responders Resources



Law Enforcement/EMA/First Responders Resources

Railroad collisions bring health and safety risks to the entire community. The best defense a First Responder has is a well thought out plan to help prevent incidents before they occur and respond to them effectively if they do.

The screenshot displays the Federal Railroad Administration website. The top navigation bar includes links for About FRA, Railroad Safety, Rail Network Development, Research & Development, Legislation & Regulations, Grants & Loans, and FRA eLibrary. A search bar is located on the right. Below the navigation, a breadcrumb trail reads: Home / Railroad Safety / Divisions / HRCT Programs / I Can Improve Rail Safety... The main content area is titled "Law Enforcement/First Responders Resources" and is organized into four columns:

- AS LAW ENFORCEMENT:** Includes sections for "Become familiar with railroads operating in your area of jurisdiction..." and "Take note of grade crossings and develop a map of railroads in areas you patrol...". It also features a "Monitor grade crossings: educate violators and issue citations when necessary" section and a "Develop an emergency response plan for handling rail-related incidents" section. A video link is provided at the bottom.
- AS EMERGENCY RESPONDERS:** Includes sections for "Ensure your team has an understanding of basic railroad operations, policies, and procedures..." and "Develop an emergency response plan for handling railroad incidents...". It also features a "During an emergency, locate the blue and white Emergency Notification System (ENS) sign to contact the railroad..." section and a "Learn how to rescue and extricate train crews from locomotives in an emergency" section. Video links are provided at the bottom.
- AS EMERGENCY DISPATCHERS:** Includes sections for "Direct callers to look for the blue and white Emergency Notification System (ENS) sign to quickly determine the location of the railroad emergency..." and "Immediately contact the railroad responsible for the track...". It also features a "Determine if the incident involves a trespasser or a motor vehicle..." section and a "Determine if there are additional dangers such as motor vehicles on the track or hazardous cargo..." section. A video link is provided at the bottom.
- IN AN EMERGENCY AT A GRADE CROSSING:** Features a "REPORT PROBLEM OR EMERGENCY 1-800-555-5555 X-ING 836 597 H BYZ RAILROAD" sign image. It includes instructions: "Locate the blue and white Emergency Notification System (ENS) sign at the grade crossing...", "Call the railroad for help - use the phone number on the sign...", "Tell the dispatcher your location by providing the crossing identification number on the sign...", and "Tell the dispatcher what the emergency is...". A video link is provided at the bottom.

Below the text columns, there are five video thumbnails with red play buttons:

- "RAIL SAFETY for LAW ENFORCEMENT"
- "RAIL SAFETY for EMERGENCY RESPONSE SERVICES"
- "RAIL SAFETY for EMERGENCY DISPATCHERS"
- "TRAIN CREW RESCUE"
- "EMERGENCY INVESTIGATION"

At the bottom of the resource area, there are "Expand All" and "Collapse All" buttons.

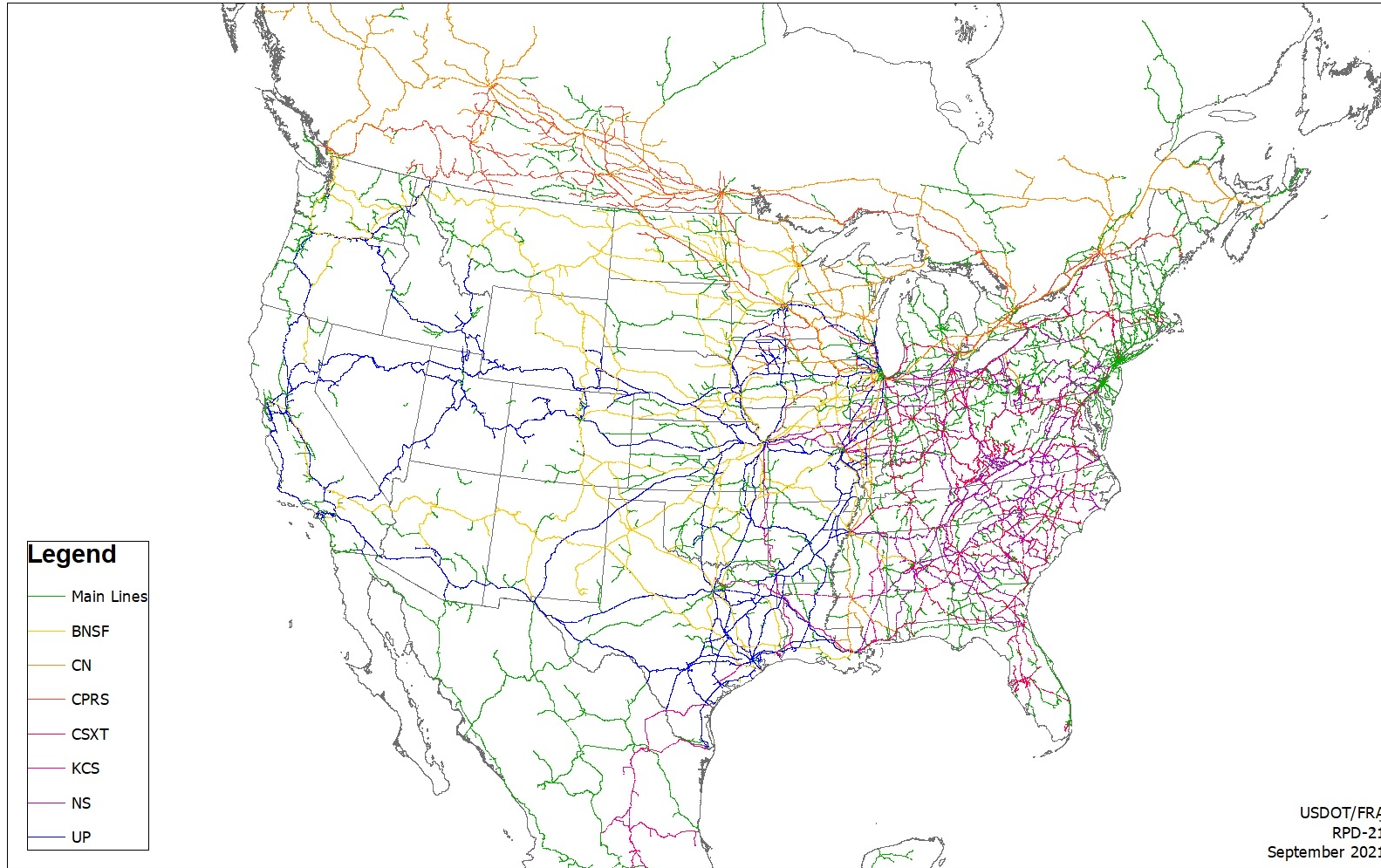
FRA's Geographic Information Systems

FRA GIS Program and GIS Layers

- North American Rail Network (NARN)
- Crossings
- Mileposts (Data Disclaimer)

FRA's Geographic Information Systems

North American Rail Network



FRA's Geographic Information Systems

Spatial Accuracy – NARN Standards

- Typically, the rail right of way is ~ 50ft
- In the US: ~ 1:4,800
- In Canada: between 1:4,800 – 1:12,000; > 1:100k
- In Mexico : between 1:4,800 – 1:100,000; > 1:100k
- 1:1,200 ± 3.33 ft.
- 1:2,400 ± 6.67 ft.
- 1:4,800 ± 13.33 ft.
- 1:10,000 ± 27.78 ft.
- 1:12,000 ± 33.33 ft.
- 1:24,000 ± 40.00 ft.
- 1:63,360 ± 105.60 ft.
- 1:100,000 ± 166.67 ft.

FRA's Geographic Information Systems

NARN Attribution

- Spatial Lines and Nodes
 - Unique IDs
 - FRAARCID
 - FRANODEID
- Attributes
 - Geography
 - State
 - County
 - Country
 - Region
 - Time zone
 - Passenger
 - STRACNET
- Ownership
- Trackage Rights
- Division
- Subdivision
- Number of Tracks

FRA's Geographic Information Systems

Collaboration

- FRA works directly with railroads to maintain / enhance the network
- FRA shares data with industry and other partners to support a wide variety of initiatives



National Transportation Atlas Database (NTAD)

Bureau of Transportation Statistics

BTS Catalog Home Geospatial Home

Geospatial at BTS

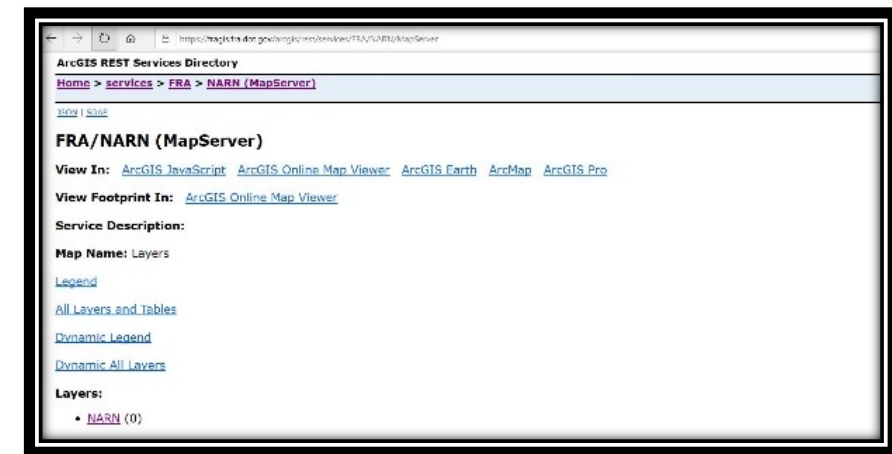
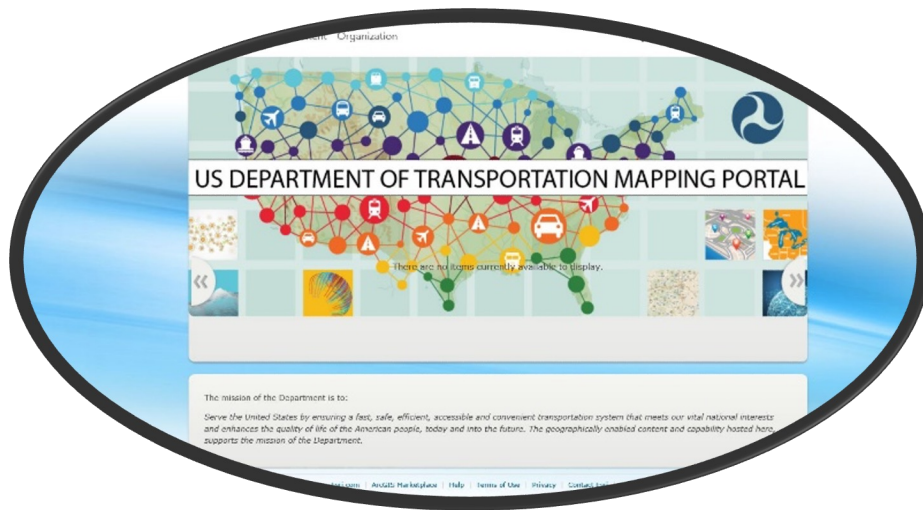
Open Data Catalog

On the BTS Open Data site, browse geospatial data that is part of the BTS National Transportation Atlas Database (NTAD) product. NTAD is a set of nationwide geographic databases of public spatial information for transportation facilities and networks; flows of people, goods, vehicles, and craft over the transportation networks; and social, economic, and environmental conditions that affect or are affected by the transportation networks. Please browse our catalog, download NTAD data, and use it for visualization and analysis purposes in your projects with your own tools.

<https://data-usdot.opendata.arcgis.com/>

Access FRA's GIS Data

- Custom GIS Web Viewers
- Mobile App
- ArcGIS Online
- Web Mapping Services



FRA's GIS Home Page

U.S. Department of Transportation
Federal Railroad Administration

Search

About FRA | Railroad Safety | Rail Network Development | Research & Development | Legislation & Regulations | Grants & Loans | FRA eLibrary

Home / Rail Network Development / Maps GIS

Rail Network Development Overview

Passenger Rail

Freight Rail

Environment

Planning

International

Maps and Data

Training & Guidance

Maps – Geographic Information System

Overview

The Federal Railroad Administration (FRA) is the authoritative source of information on passenger and freight rail networks for the U.S. federal government. FRA provides geospatial resources to the public on rail networks, including data on grade crossings, Amtrak stations, and more. This page contains information about and links to FRA's [Safety Map](#), [Trespassers Casualty Map](#), and [Grade Crossing Inventory](#).

FRA also provides rail data to the Bureau of Transportation Statistics (BTS) to support the Open Data Catalog, which includes information on the North American Rail Network (NARN).

FRA Safety Map

The [FRA Safety Map](#) is an interactive map that outlines rail networks for:

- Class I Railroads
- Passenger Rail
- Commuter Rail
- Amtrak

Users can manipulate data to view maps by topography or street view, and add additional data layers including:

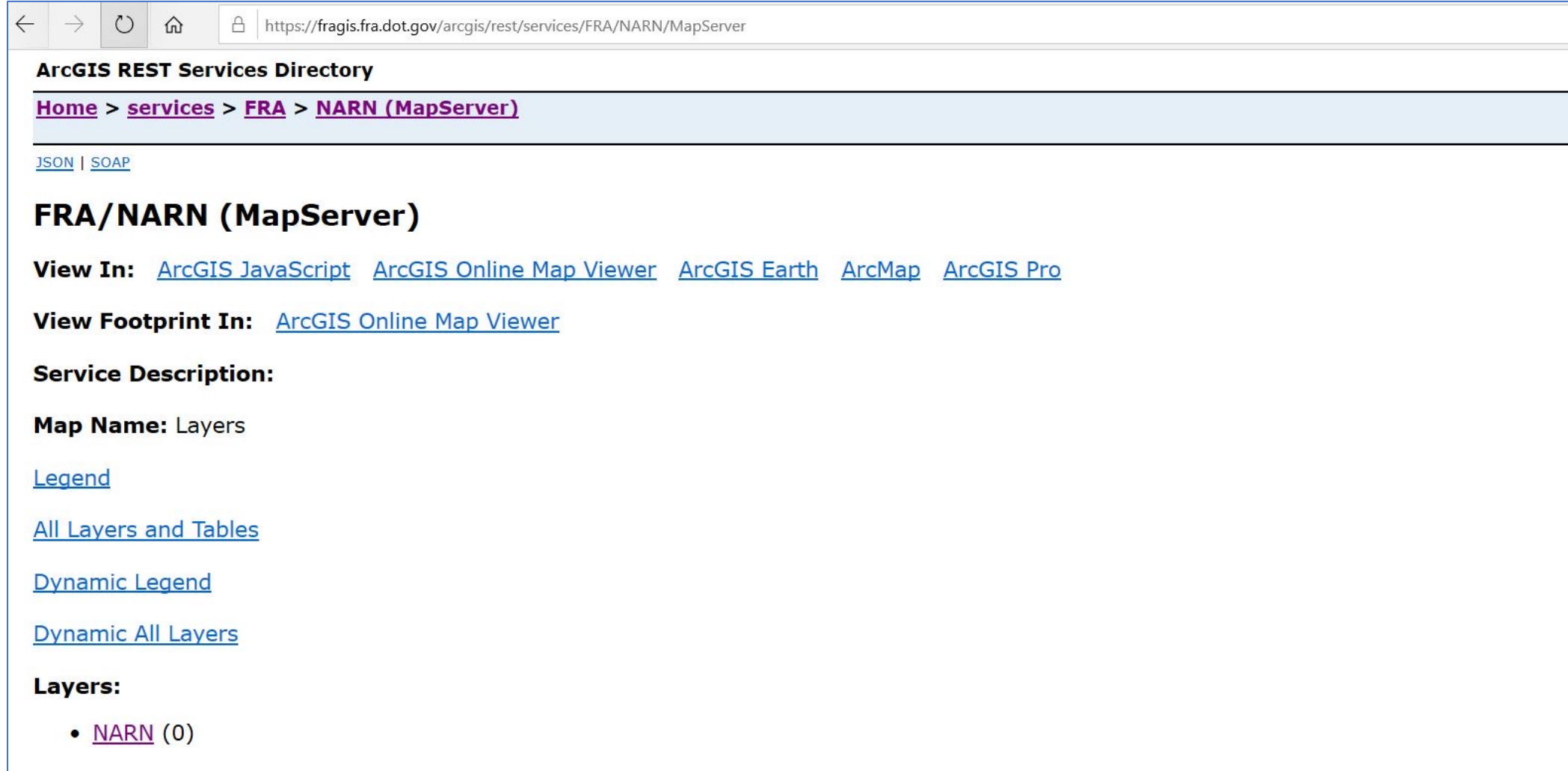
- Freight Stations
- Grade Crossings (updated weekly)
- Mileposts



FRA's [Grade Crossing Inventory](#) provides visual and geographic views of grade crossings. Users can input a Crossing ID and select "Generate Map" to be taken to a custom report. Please refer to the [FRA GIS Web Application User Guide](#) for more information.

<https://railroads.dot.gov/maps-and-data/maps-geographic-information-system/maps-geographic-information-system>

REST Services: <https://fragis.fra.dot.gov/arcgis/rest/services>



← → ↻ 🏠 🔒 <https://fragis.fra.dot.gov/arcgis/rest/services/FRA/NARN/MapServer>

ArcGIS REST Services Directory

[Home](#) > [services](#) > [FRA](#) > [NARN \(MapServer\)](#)

[JSON](#) | [SOAP](#)

FRA/NARN (MapServer)

View In: [ArcGIS JavaScript](#) [ArcGIS Online Map Viewer](#) [ArcGIS Earth](#) [ArcMap](#) [ArcGIS Pro](#)

View Footprint In: [ArcGIS Online Map Viewer](#)

Service Description:

Map Name: Layers

[Legend](#)

[All Layers and Tables](#)

[Dynamic Legend](#)

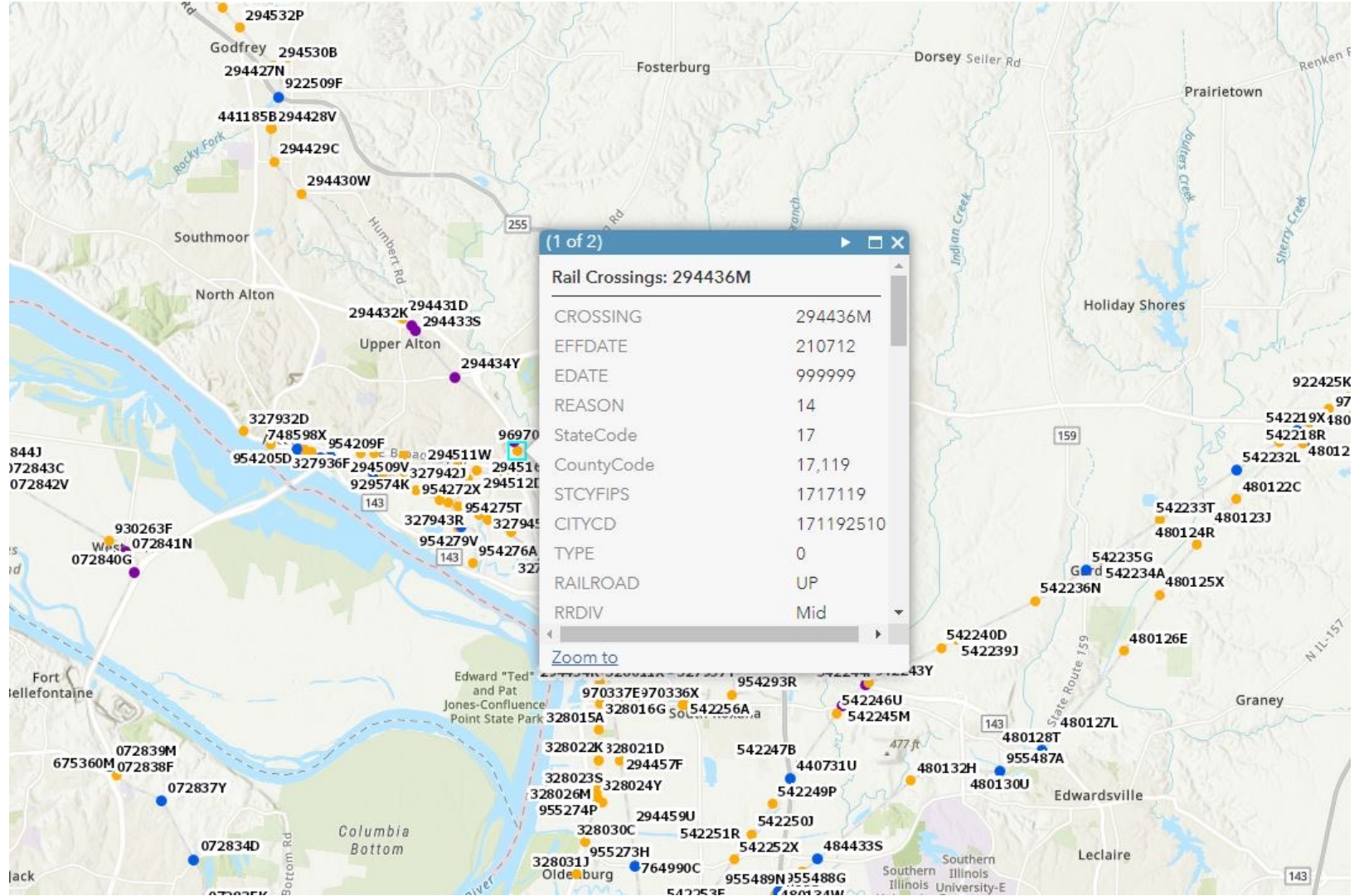
[Dynamic All Layers](#)

Layers:

- [NARN](#) (0)

FRA's Geographic Information Systems

Highway-Rail Grade Crossing



FRA's Geographic Information Systems

Mileposts

Rail Milepost – Data Disclaimer

The FRA Milepost is a spatial file that originates from multiple sources and contains point locations of mileposts along FRA's rail network. The mileposts were developed from various sources and should only be used as a reference file. The railroad lines and their mileposts are privately owned and are subjected to changes based on the rail owner. If used for identifying specific locations, please contact the railroad to verify the mileposts numbers and their locations.



QUESTIONS?

Contact Us

Federal Railroad Administration
1200 New Jersey Avenue, SE
Washington, DC 20590



Connect with us USDOTFRA



U.S. Department of Transportation
Federal Railroad Administration

Monica Shaw

202-493-6299

Monica.shaw@dot.gov

Transportation Specialist

Raquel Wright

202-631-2992

Raquel.wright@dot.gov

GIS Specialist

McConnell Public Safety & Transportation Operations Center (MPSTOC)



Introduction of MPSTOC

- MPSTOC is a partnership between the County of Fairfax and the Commonwealth of Virginia. It is co-owned by the County and Commonwealth.
- County is the major shareholder and maintains and operates the Center. Invoicing is performed once a year to collect the State's costs in running the Center.
- Discussions for the development of a hardened facility designed to house critical County and State operational and emergency management functions began after the September 11th attacks in 2001.
- MPSTOC contains mission critical/redundant systems, 100-foot set-back for blast restraint and progressive collapse design characteristics.
- 147,000 square foot two story building with two main components, separated by a service yard and outdoor courtyard:
 - Main MPSTOC (114,000 sq. ft.)
 - Forensic facility and other support functions (33,000 sq. ft.)

MPSTOC Benefits

- Maximizing the use of County and State resources while minimizing costs
- Allowing local and state transportation and public safety agencies to engage in cooperative planning, investment and operations
- Enhancing the delivery of public safety services
- Better managing the response to – and recovery from – major emergencies
- Improving traffic congestion management

Emergency Operations Center (EOC)

- Department of Emergency Management and Security houses a 3,600 sq. ft. Emergency Operations Center (EOC)
- Representatives from all county agencies, as well as non-profit and federal partners, are present when the EOC is fully activated
- County representatives include:
 - Police, Fire, DEMS, Public Affairs, Family Services, DPSC, Sheriff, Schools, County Attorney, Purchasing, Information Technology, Fairfax/Falls Church Community Service Board, Transportation
- Other partners include:
 - American Red Cross, VDOT, Dominion Virginia Power, Fairfax Water, Washington Metropolitan Area Transit Authority (WMATA), Virginia Department of Emergency Management, Military (based on the event), FBI, CIA and other federal partners
 - National Weather Service participates through conference calls

Communications Center (Ops Floor)

- County and Commonwealth partners are co-located on a 12,000 sq. ft. communications floor
- Partner supervisors share a raised platform in the center of the room to facilitate collaboration and communication of critical crosscutting functional and/or regional issues

Co-location of:

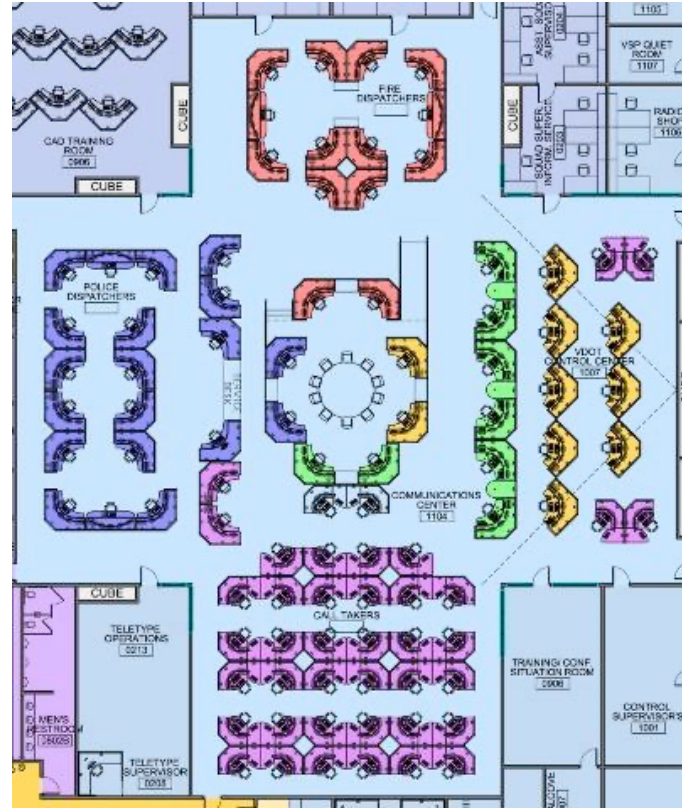
- VSP (call-taking, dispatch and support) #77
- VDOT (Traffic Operations Center, signal system and support)
- Fairfax County emergency and non-emergency call-taking
- Fairfax County Fire Department dispatch
- Fairfax County Police Department dispatch

Detailed View of Inner Section of Communications Center

Fire Dispatch

Police Dispatch

VDOT /VSP



Call Takers

Communications Center (Ops Floor)



Communications Center (Ops Floor)



PSAP Collocation

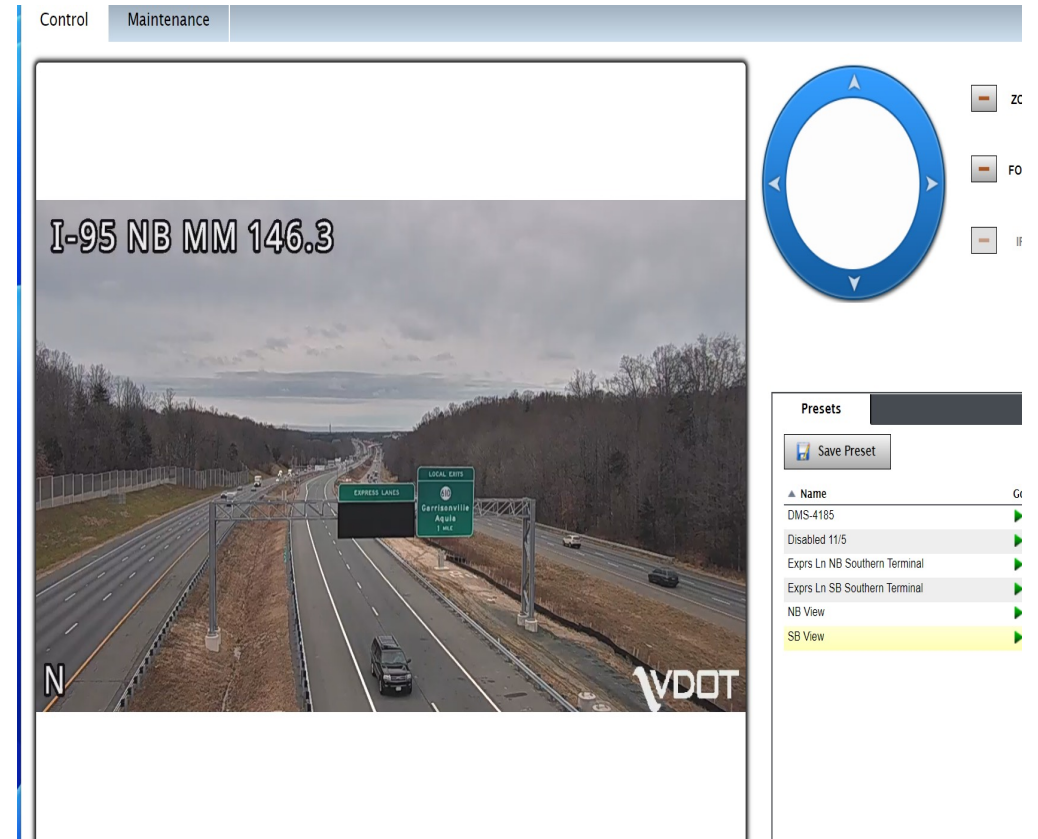
Onsite Force Multiplier

- Over 500 cameras in the NOVA region
- They are connected via cellular modems or fiber
- A large federal/ military component in the region
- Instant information from all ITS devices is available
- RGB Galileo client 39 55 inch displays 9x4



Cameras

- Typical view of one of our cameras zoomed out
- PTZ all directions with auto and manual focus features
- Can manually open and close the iris to match lighting conditions
- Cameras switch to black and white at night
- Cameras switch to black and white at night
- 15 to 30 frames per second
- What's blocked and what's involved is our focus
- No recording!



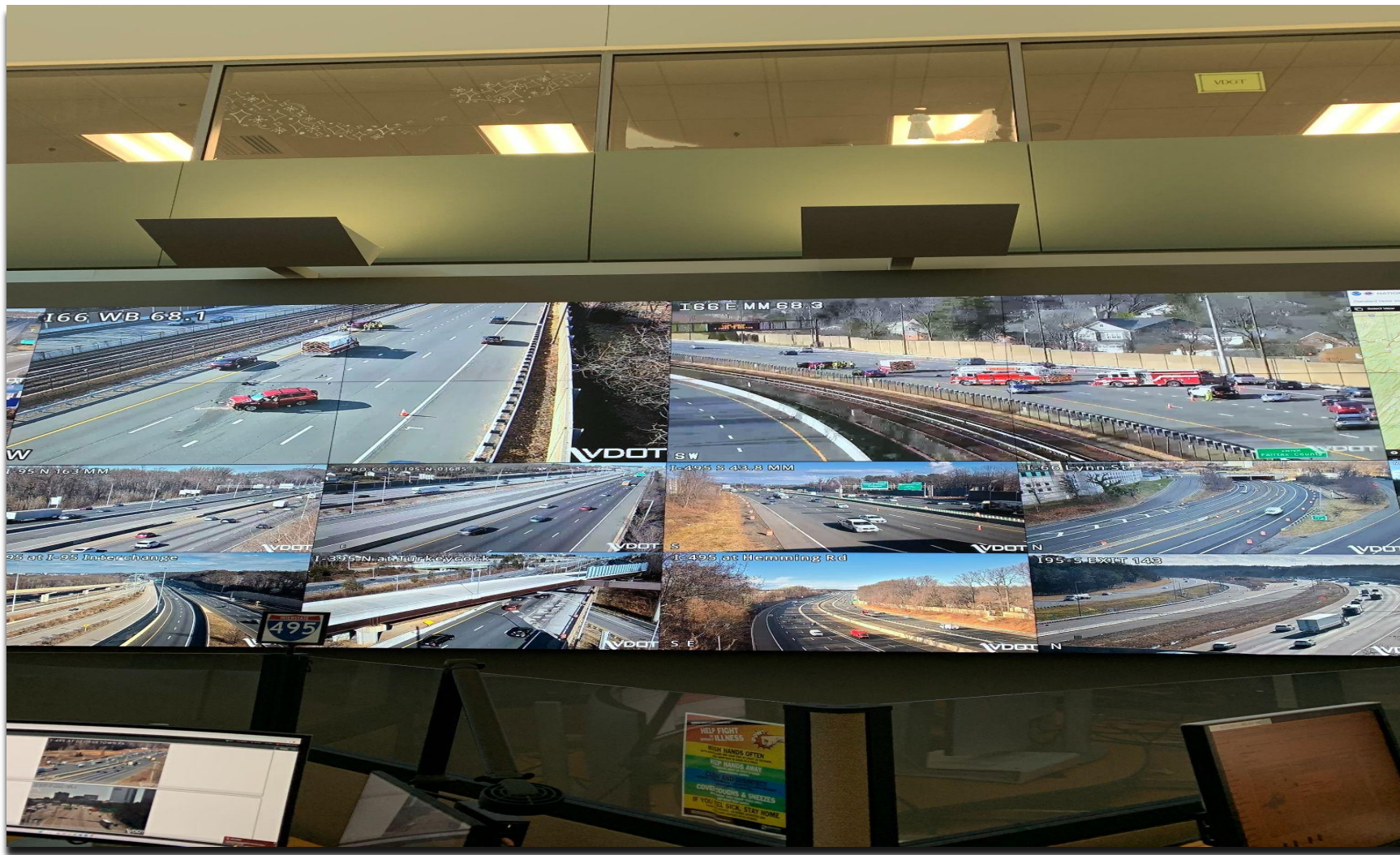
Cameras

- Same Camera max zoomed in (1.2 miles)

The screenshot shows a camera control interface for 'Cameras > NRO-CCTV-195-N-01462'. It features a 'Control' tab and a 'Maintenance' tab. The main video feed displays a highway scene with the text 'I-95 NB MM 146.3' overlaid. To the right of the video are navigation arrows and control buttons for ZOOM, FOCUS, and IRIS (with an 'Auto' checkbox). Below the video is a 'Presets' section with a 'Save Preset' button and a search field. A table lists various camera views with 'Go To' links and status indicators.

Name	Go To	
DMS-4185	▶	✗
Disabled 11/5	▶	✗
Exprs Ln NB Southern Terminal	▶	✗
Exprs Ln SB Southern Terminal	▶	✗
NB View	▶	✗
SB View	▶	✗

VDOT Video Wall



OpenTMS

OPENTMS Map Manage Devices More norvel.cooksey@vdotof.org

Alerts

Ignore

Search List

Active	Examined	Ignored	Associa ID	Type	Location	Source:	Severity	Home Groups	Creation Time	Last Updated	Options	
<input type="checkbox"/>	<input checked="" type="checkbox"/>	<input checked="" type="checkbox"/>	<input checked="" type="checkbox"/>	<input checked="" type="checkbox"/>	PD2301040000290 MOTOR VEHICLE CRASH: HIT AND RUN	2226 WILLIAM HARRIS WAY	Prince William County	Unknown	NRO	01/04/2023 09:21:32	01/04/2023 10:00:01	Details
<input type="checkbox"/>	<input checked="" type="checkbox"/>	<input checked="" type="checkbox"/>	<input checked="" type="checkbox"/>	<input checked="" type="checkbox"/>	DIV723000998 MOTOR VEH CRASH - PROP DAMAGE	CREIGHTON RD/EVERGREEN MILLS RD	DIV7@vsp.state.va.us	Moderate	NRO	01/04/2023 08:17:58	01/04/2023 09:58:27	Details
<input type="checkbox"/>	<input checked="" type="checkbox"/>	<input checked="" type="checkbox"/>	<input checked="" type="checkbox"/>	<input checked="" type="checkbox"/>	PD2301040000290 MOTOR VEHICLE CRASH: HIT AND RUN	13990 RICHMOND HWY. LONGVIEW 711	Prince William County	Unknown	NRO	01/04/2023 09:18:00	01/04/2023 09:57:01	Details
<input type="checkbox"/>	<input checked="" type="checkbox"/>	<input checked="" type="checkbox"/>	<input checked="" type="checkbox"/>	<input checked="" type="checkbox"/>	E230041076 SUSPICIOUS PERSON	7131 SILVER LAKE BLVD ALEX: @MANCHESTER LAKES SENIOR APTS	Fairfax	Unknown	NRO	01/04/2023 09:41:31	01/04/2023 09:56:01	Details
<input type="checkbox"/>	<input checked="" type="checkbox"/>	<input checked="" type="checkbox"/>	<input checked="" type="checkbox"/>	<input checked="" type="checkbox"/>	PD2301040000292 TRAFFIC OBSTRUCTION	8330 SUDLEY RD. BURGER KING	Prince William County	Unknown	NRO	01/04/2023 09:54:01	01/04/2023 09:54:31	Details
<input type="checkbox"/>	<input checked="" type="checkbox"/>	<input checked="" type="checkbox"/>	<input checked="" type="checkbox"/>	<input checked="" type="checkbox"/>	E230041116 ACCIDENT - HIT & RUN	7905 HILLTOP VILLAGE CENTER DR ALEX: @WEGMANS	Fairfax	Unknown	NRO	01/04/2023 09:54:14	01/04/2023 09:54:14	Details
<input type="checkbox"/>	<input checked="" type="checkbox"/>	<input checked="" type="checkbox"/>	<input checked="" type="checkbox"/>	<input checked="" type="checkbox"/>	E230040857 D.O.A./C.P.R. IN PROGRESS (PD)	2222 COLTS NECK RD RSTN. 1216 @HUNTERS WOODS AT TRAILS EDGE	Fairfax	Unknown	NRO	01/04/2023 08:28:16	01/04/2023 09:54:14	Details
<input type="checkbox"/>	<input checked="" type="checkbox"/>	<input checked="" type="checkbox"/>	<input checked="" type="checkbox"/>	<input checked="" type="checkbox"/>	DIV223000653 WORK ZONE	HLP	DIV2@vsp.state.va.us	Moderate	NRO	01/04/2023 05:57:47	01/04/2023 09:53:49	Details
<input type="checkbox"/>	<input checked="" type="checkbox"/>	<input checked="" type="checkbox"/>	<input checked="" type="checkbox"/>	<input checked="" type="checkbox"/>	E230041092 ACCIDENT - PROPERTY DAMAGE	1651 RESTON PKWY RSTN. @HOME DEPOT	Fairfax	Unknown	NRO	01/04/2023 09:46:10	01/04/2023 09:46:10	Details
<input type="checkbox"/>	<input checked="" type="checkbox"/>	<input checked="" type="checkbox"/>	<input checked="" type="checkbox"/>	<input checked="" type="checkbox"/>	PD2301040000286 MOTOR VEHICLE CRASH: INJURIES	2200 YORK DR. ES ELIZABETH VAUGHAN	Prince William County	Unknown	NRO	01/04/2023 08:23:00	01/04/2023 09:42:31	Details
<input type="checkbox"/>	<input checked="" type="checkbox"/>	<input checked="" type="checkbox"/>	<input checked="" type="checkbox"/>	<input checked="" type="checkbox"/>	DIV223000683 DISABLED VEHICLE ABANDONED	NB 95 AT 126.6 MM	DIV2@vsp.state.va.us	Low	NRO	01/04/2023 08:56:40	01/04/2023 09:30:45	Details
<input type="checkbox"/>	<input checked="" type="checkbox"/>	<input checked="" type="checkbox"/>	<input checked="" type="checkbox"/>	<input checked="" type="checkbox"/>	E230041019 ACCIDENT - PROPERTY DAMAGE	BRADDOCK RD/BACKLICK RD ANDL	Fairfax	Unknown	NRO	01/04/2023 09:24:46	01/04/2023 09:24:46	Details
<input type="checkbox"/>	<input checked="" type="checkbox"/>	<input checked="" type="checkbox"/>	<input checked="" type="checkbox"/>	<input checked="" type="checkbox"/>	DIV723001035 DISABLED VEHICLE OCCUPIED	WB 66 EO RT 28 EXIT 53 CENTREVILLE : RS	DIV7@vsp.state.va.us	Moderate	NRO	01/04/2023 09:11:51	01/04/2023 09:12:33	Details
<input type="checkbox"/>	<input checked="" type="checkbox"/>	<input checked="" type="checkbox"/>	<input checked="" type="checkbox"/>	<input checked="" type="checkbox"/>	E230040860 SUSPICIOUS PERSON	1890 METRO CENTER DR RSTN. @KAISER PERMANENTE	Fairfax	Unknown	NRO	01/04/2023 08:29:49	01/04/2023 08:29:49	Details

1-19 of 19

Update Time	Status	Event Info	Notes

Alert Update: 2226 WILLIAM HARRIS WAY M...
 Alert Update - Location: 2226 WILLIAM HARRIS WAY -
 Description: MOTOR VEHICLE CRASH: HIT AND RUN - 10:00

OpenTMS

OPEN:TMS Map Manage Devices More norvel.cooksey@vdotoLog

Alerts

Ignore

Search List

Active	Examined	Ignored	Associa ID	Type	Location	Source:	Severity	Home Groups	Creation Time	Last Updated	Options	
<input type="checkbox"/>	<input checked="" type="checkbox"/>	<input checked="" type="checkbox"/>	<input checked="" type="checkbox"/>	E230041149	SUSPICIOUS PERSON	7409 EASTMORELAND RD ANDL @PARLIAMENT APTS	Fairfax	Unknown	NRO	01/04/2023 10:05:17	01/04/2023 10:05:17	Details
<input type="checkbox"/>	<input checked="" type="checkbox"/>	<input checked="" type="checkbox"/>	<input checked="" type="checkbox"/>	SO2023010400001	CRASH PROPERTY DAMAGE	RED RUM DR / ASHBURN VILLAGE BLVD	Loudoun	Unknown	NRO	01/04/2023 10:04:36	01/04/2023 10:04:36	Details
<input type="checkbox"/>	<input checked="" type="checkbox"/>	<input checked="" type="checkbox"/>	<input checked="" type="checkbox"/>	DIV723001035	DISABLED VEHICLE OCCUPIED	WB 66 EO RT 28 EXIT 53 CENTREVILLE : RS	DIV7@vsp.state.va.us	Moderate	NRO	01/04/2023 09:11:51	01/04/2023 10:02:26	Details
<input type="checkbox"/>	<input checked="" type="checkbox"/>	<input checked="" type="checkbox"/>	<input checked="" type="checkbox"/>	PD2301040000290	MOTOR VEHICLE CRASH: HIT AND RUN	13990 RICHMOND HWY: LONGVIEW 711	Prince William County	Unknown	NRO	01/04/2023 09:18:00	01/04/2023 09:57:01	Details
<input type="checkbox"/>	<input checked="" type="checkbox"/>	<input checked="" type="checkbox"/>	<input checked="" type="checkbox"/>	E230041076	SUSPICIOUS PERSON	7131 SILVER LAKE BLVD ALEX @MANCHESTER LAKES SENIOR APTS	Fairfax	Unknown	NRO	01/04/2023 09:41:31	01/04/2023 09:56:01	Details
<input type="checkbox"/>	<input checked="" type="checkbox"/>	<input checked="" type="checkbox"/>	<input checked="" type="checkbox"/>	PD2301040000292	TRAFFIC OBSTRUCTION	8330 SUDLEY RD: BURGER KING	Prince William County	Unknown	NRO	01/04/2023 09:54:01	01/04/2023 09:54:31	Details
<input type="checkbox"/>	<input checked="" type="checkbox"/>	<input checked="" type="checkbox"/>	<input checked="" type="checkbox"/>	E230041116	ACCIDENT - HIT & RUN	7905 HILLTOP VILLAGE CENTER DR ALEX @WEGMANS	Fairfax	Unknown	NRO	01/04/2023 09:54:14	01/04/2023 09:54:14	Details
<input type="checkbox"/>	<input checked="" type="checkbox"/>	<input checked="" type="checkbox"/>	<input checked="" type="checkbox"/>	E230040857	D.O.A./C.P.R. IN PROGRESS (PD)	2222 COLTS NECK RD RSTN 1216 @HUNTERS WOODS AT TRAILS EDGE	Fairfax	Unknown	NRO	01/04/2023 08:28:16	01/04/2023 09:54:14	Details
<input type="checkbox"/>	<input checked="" type="checkbox"/>	<input checked="" type="checkbox"/>	<input checked="" type="checkbox"/>	DIV223000653	WORK ZONE	HLP	DIV2@vsp.state.va.us	Moderate	NRO	01/04/2023 05:57:47	01/04/2023 09:53:49	Details
<input checked="" type="checkbox"/>	<input checked="" type="checkbox"/>	<input checked="" type="checkbox"/>	<input checked="" type="checkbox"/>	E230041092	ACCIDENT - PROPERTY DAMAGE	1651 RESTON PKWY RSTN @HOME DEPOT	Fairfax	Unknown	NRO	01/04/2023 09:46:10	01/04/2023 09:46:10	Details
<input type="checkbox"/>	<input checked="" type="checkbox"/>	<input checked="" type="checkbox"/>	<input checked="" type="checkbox"/>	PD2301040000286	MOTOR VEHICLE CRASH: INJURIES	2200 YORK DR: ES ELIZABETH VAUGHAN	Prince William County	Unknown	NRO	01/04/2023 08:23:00	01/04/2023 09:42:31	Details
<input type="checkbox"/>	<input checked="" type="checkbox"/>	<input checked="" type="checkbox"/>	<input checked="" type="checkbox"/>	DIV223000683	DISABLED VEHICLE ABANDONED	NB 95 AT 126 6 MM	DIV2@vsp.state.va.us	Low	NRO	01/04/2023 08:56:40	01/04/2023 09:30:45	Details
<input type="checkbox"/>	<input checked="" type="checkbox"/>	<input checked="" type="checkbox"/>	<input checked="" type="checkbox"/>	E230041019	ACCIDENT - PROPERTY DAMAGE	BRADDOCK RD/BACKLICK RD ANDL	Fairfax	Unknown	NRO	01/04/2023 09:24:46	01/04/2023 09:24:46	Details
<input type="checkbox"/>	<input checked="" type="checkbox"/>	<input checked="" type="checkbox"/>	<input checked="" type="checkbox"/>	E230040860	SUSPICIOUS PERSON	1890 METRO CENTER DR RSTN @KAISER PERMANENTE	Fairfax	Unknown	NRO	01/04/2023 08:29:49	01/04/2023 08:29:49	Details

1-19 of 19

Update Time	Status	Event Info	Notes
01/04/2023 09:46:10	Active	ACCIDENT - PROPERTY DAMAGE	2 VEH ACC/ NO INJ/ RED TOYT RAV4 VS GRV HYUNDAI/ WILL PULL INTO THE HOME DEPOT PARKING LOT TO NOT BLOCK TRAFF

Alert Update: 1-395S HOV at MM 9:3649112 ...

Alert Update - Location: 1-395S HOV at MM 9:3649112 - Southbound Lanes - Description: Speed Update: Speed-51

1-1 of 1

Contact Information

Tracy Shelton

MPSTOC Partnership General Manager

Tracy.Shelton@FairfaxCounty.gov

(571) 350-2121

Norvel Cooksey

TOC Program Manager

VDOT Northern Region Operations

Norvel.Cooksey@VDOT.Virginia.gov

Office (703) 877-3406

Mobile (571) 449-0281

McConnell Public Safety & Transportation Operations Center

4890 Alliance Drive

Fairfax, Virginia 22030

Questions?



Future Webinars

- March 14th , 2023, National 911 Program Update - https://us06web.zoom.us/webinar/register/WN_ysPMeY03Rn2GRYmgrwRc2w
- May 9th, 2023 - https://us06web.zoom.us/webinar/register/WN_f6Bg8Q4USjOi8cHTI6fL8A
- July 11th, 2023 - https://us06web.zoom.us/webinar/register/WN_xlH4ZUmNRMK6MYe2i0EV_A
- September 12th, 2023 - https://us06web.zoom.us/webinar/register/WN_WfoQylFeQo-jxTC1YYeupQ
- November 14th, 2023 - https://us06web.zoom.us/webinar/register/WN_XgOTgt1sSKakJJREvRswlw

Previous State of 911 webinars are available at: www.911.gov/webinars.html

National 911 Program

- Brian Tegtmeyer

National 911 Program Coordinator

202-366-2705

Brian.Tegtmeyer@dot.gov

- Feedback or questions can be sent to: nhtsa.national911@dot.gov